

Wittersham Church of England Primary School

'On a voyage of discovery: learning and growing together in the light of God'

Weekly Newsletter Friday 9th September 2023



Here we are at the start of a new academic year! I hope you all enjoyed your summer break. Typically, as we return to school, the weather has changed and been fantastic! Despite this, we have enjoyed getting the children outside into our environment this week. I hope many of you have been able to make the most of the warm evenings.

Firstly, I would like to welcome all our new families who have joined us, I hope that you are starting to settle into the routines and structures of the school and your children have enjoyed their week. We have been so impressed with the way all children have embraced the start of the year with enthusiasm, focus and confidence. I would also like to welcome the new staff who have joined our team; Mrs Smith (Oast Class Teacher), Miss Robinson (Vikings Class Teacher), Miss Bailey (Windmills Class Teaching Assistant) and Mrs Everest (Smugglers Class Teaching Assistant). We are also pleased to welcome back Miss Haywood from her maternity leave, who will support the teaching and learning in Vikings as a Class Teaching Assistant.

You may have noticed that over the holidays several improvements and changes have happened around the school. The outside of the school has been redecorated, the old schoolhouse turret has been refurbished, new doors have been fitted throughout the school, a new disabled toilet has been installed, the garden room has a new floor and been refurbished as a nurture suite, we have new windows in the hall and the mobile has been repurposed as our new Oast (Year 1) classroom. These refurbishments have certainly added to the excitement of returning to school after the summer break. We also look forward to replacing the school entrance in the October half term with a new front door and windows.

It was great to see so many of our families join us for our Meet the Teacher session on Tuesday, we look forward to continuing to work in partnership with you over this academic year. We hope you will be able to join us at a variety of different events we have planned, some of which are mentioned within this newsletter.

As always, do come and speak with us should you have any questions or queries – we are here to help! I hope you all have a great weekend.

Attendance

Attendance impacts greatly on the wellbeing and achievement of children in school. Each week we will continue to publicise class attendance figures. As a school, our aim is for every child to be with us 100% of the time. We appreciate this is not always possible, and so have set a target of 96% attendance for the school this year. All you can do to support us with this is greatly appreciated. If you are ever concerned about your child's attendance or require further support in ensuring your child is in school each day, please let us know.

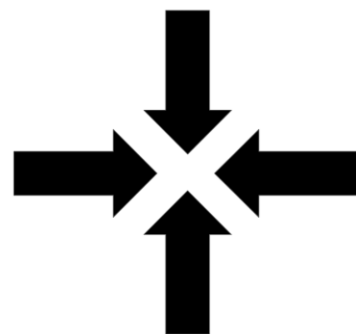
The DFE has asked schools to share the following guidance with families. <https://www.nhs.uk/live-well/is-my-child-too-ill-for-school/> Please do have a read through as it may help you in the future.

This week in worship...

This week in worship we have spent time exploring our new vision and values as well as taking inspiration from Nehemiah 1-6 and Philippians 1:4, to consider what it means to be 'reconnected' and back together again as a community.



With our families and our friends, God:
'Help us to build well'
As we share our lives together, God:
'Help us to build well'
As we live out our school values, God:
'Help us to build well'
As we rebuild our school community, God:
'Help us to build well'



AMEN

Friday Forest School



We are excited to build upon the success of last year's Forest School Sessions.

The dates for this term are as follows:

Friday 15th September:
Windmills and Vikings

Friday 22nd September:
Oast and Oxney

Friday 29th September:
Smugglers, Windmills and Rother

Children will be outside in all weathers, so please make sure they **come to school dressed appropriately for the session** (in clothes they are prepared to get muddy in). Children should also bring a change of footwear for the sessions, particularly when it is muddy underfoot.

School Meal Payments

A reminder to all new Year 3 parents that the universal infant free meal scheme has ended now that your child has moved up to KS2.

Meals must be paid for in advance or on the day at a cost of £2.50 per day. This can either be sent into school in a clearly named envelope, or payments can be made online - contact Mrs Crabtree for details.

Separately to the universal infant free meal scheme, some families may be eligible for Free School Meals. Information was sent home regarding this at the end of the summer term to all Year 2 pupils. All eligible pupils are able to order a meal daily at no cost. We are happy to assist with applications if required - please ask Mrs Crabtree or Mrs Penn - all information is confidential.

Please do not hesitate to contact Mrs Crabtree, or pop into the school office if you have any questions regarding any of the above.



Compassion

Courage

Cooperation

School Christian Values

In recent months, we have been discussing with our children, staff, governors and parent communities how to best reform and refine our Christian values to ensure they become further embedded within our school culture and recognised by our whole community. As a Church School, these values are the foundations from which we shape every aspect of school life. They are the rationale for what we do and why we do it. Our new values are the following:

Compassion

Courage

Cooperation

We believe that these words incorporate the principles of our previous values and provide children with a greater understanding of Jesus' teachings and the holistic qualities required to be an empowered and righteous citizen of our community and beyond. In addition, to support children with understanding how these values support us, we will use the idea of our school logo ship sailing on the '3 C's' as we move through our journey together.

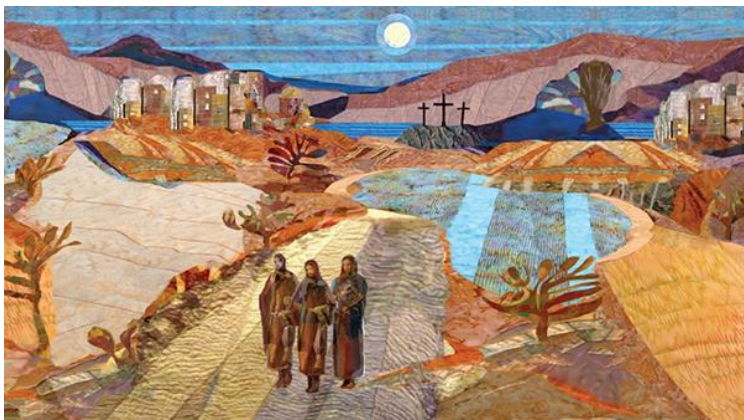
To further support our community to understand how these values are uniquely interpreted and exhibited at Wittersham, we have developed the 'Wittersham Way'. This can be seen later in this newsletter.

As a Church school we have also updated our Bible story, to further align with our strapline and strengthen the bond between all elements of our Christian ethos, providing children with a greater understanding of the meaning behind it and how they can display these qualities in everyday life.

The story we have chosen is the **Road to Emmaus – Luke 24:13-35**. This shares the story of two travellers who are joined by Jesus on their journey. During the journey, Jesus supports the travellers to open their eyes and hearts whilst also helping them to understand the scripture of his teachings. We have also selected the image below to support children in understanding this message.

September enables us with the opportunity to set our expectations and introduce new concepts with children, and I look forward to seeing these new values embed and develop throughout the academic year and beyond.

If you have any questions regarding these updates or would like to know more, please do ask.



Compassion

Courage

Cooperation

See our new
Wittersham Way
on the next
page!

Wittersham Way



COURAGE:



WE TRY OUR BEST AND
NEVER GIVE UP

COURAGE:

WE ARE RESPONSIBLE
CITIZENS



COMPASSION:

WE SHOW LOVE FOR OUR SCHOOL
AND ALL THOSE IN IT



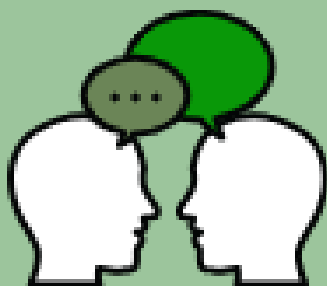
COMPASSION:

WE RESPECT OURSELVES
AND OTHERS



COOPERATION:

WE TAKE TIME TO
LISTEN TO OTHERS



COOPERATION:

WE SUPPORT EACH
OTHER ON OUR
JOURNEY



*On a voyage of discovery; learning and
growing together in the light of God.*



WSA Update



Dear Parents and Carers

The summer has whizzed by and here we are again at the start of another year of fundraising activities. Thank you to everyone who supported the online raffle over the summer. It raised a fabulous £320.

We have some exciting things coming up in the next school year including the Dinner Dance on 7th October – tickets still available.

Also, thanks to Matt Barton and Hell4leather Cricket we have a Kent players shirt signed by the Kent Cricket team ready to be raffled off next! I would like to get this properly mounted and framed so if anyone has any contacts please get in touch with me annchairwsa@gmail.com

The committee will be meeting in the next couple of weeks and setting the dates for the AGM and the Christmas Fayre. Plus, there will be the cake sales to plan and any other new ideas we can come up with.

If anyone has any ideas for new and different fund-raising activities then let us know. We always need help at our events so please consider volunteering.

If you are new to Wittersham School and want to know more about what volunteering might involve before committing to anything just drop me an email annchairwsa@gmail.com

Ann (Chair WSA)

Harvest Worship

We would like to invite our families to join us for our annual Harvest Worship on Monday 25th September.

Our service will be led by our children and held in St John the Baptist church at 9am.

We hope to see you there.



Harvest Food Donations



This year, as part of our Harvest celebrations, we would like to create a local community foodbank for all to access.

To help with this, we are asking for any donations of any longer lasting items such as tinned/canned foods, dry pasta and rice, coffee, tea or spreads.

There will be a point to drop any contributions at the school gate at drop off and pick up from next week (week beginning 11th September).

Thank you for your continued support.

Compassion

Courage

Cooperation

WRAP AROUND CARE:



It has been great to see our families and children beginning to access our wrap around care, breakfast and after-school clubs.

This will provide our families with the opportunity to use additional school provision from 7:45am-5:30pm.

Bookings are available for parents of children in years 1-6 initially. Premier Education will be applying for the site to be on a compulsory Ofsted register, which means as soon as they have this for our setting, they will be able to accept childcare vouchers against the Wittersham School provision. This could take between 3-6 months from now to come through.

Premier Education are currently gauging the interest to add our new EYFS children to the registration, and allow children from reception age into the wrap around care provision. This is due to them requiring additional adults to meet staff to children ratios for EYFS aged children.

Parents can begin booking sessions via the following link: www.premier-education.com/parents/venue/courses/448

You may also wish to watch the following promotional video:

[WRAPAROUND CARE PROMOTIONAL VIDEO](#)

If you have any questions regarding this, please do speak to me via dojo, on the gate or the school office.

I am excited to see our children engage with our wrap around care and hope this will further support our families in managing childcare in what is a busy time for us all.



Compassion

Courage

A poster for a "Dinner Dance" event. The background is dark with a golden, sparkling texture. At the top, it says "Wittersham School Association" and "Glitz and Glamour". The main title "DINNER DANCE" is in large, stylized letters, with "DINNER" in white and "DANCE" in gold. Below the title, it says "SATURDAY 7th OCTOBER" and "AT LONDON BEACH RESORT". Further down, it lists "3 COURSE MEAL", "LIVE DJ", and "£45 per ticket". There is a QR code with the text "Scan the QR code to book your place" above it. To the right of the QR code, it says "Arrival: 7pm", "Meal 7:30pm", and "Carriages 11:45pm". Below that, it says "Raffle and games on the night (cash only)" and "For more information: annchairwsa@gmail.com". At the bottom, it says "Wittersham School Association Registered Charity No. 1059824". There are also illustrations of champagne glasses.

Dates for your diary

A reminder that Term 1 ends on Friday 20th October.

Term 2 will begin on Monday 30th October and end on Friday 15th December.



Cooperation



As with last year, we are continually reviewing and seeking to add to our clubs. I am pleased to say we have a few new additions for our children as well as some familiar favourites! Clubs will begin in the week beginning MONDAY 18th SEPTEMBER and will run for a 5-week block.

Booking for these clubs will open at 8pm on Wednesday 13th September. A link for this booking can be found here: <https://wittershamcep.schoolcloud.co.uk/>
Please remember this link will not go live until 8pm on Wednesday 13th September.

The club list for Term 1 is as follows:

MONDAY:

- Reading and Colouring Club - Open to all children - 3:05-4:15pm (£2 a session)
- Gardening Club - Years 3-6 - 3:05-4:15 (£2 a session)

TUESDAY:

- Yoga Club - Open to all children - 7:50-8:30am (£5 a session)
- Forest School Club - Open to all children - 12:30-1pm (lunchtime) (No cost)
- Lego Club - 3:05-4:15pm - Open to all children (£2 a session)

WEDNESDAY:

- Choir Club - Open to all children - 12:30-1pm (lunchtime) (No cost)
- Sports Club - Years 3-6 - 3:05-4:15pm (No cost)
- Musical Theatre Club - Years 2-5 - 3:05-4:15pm (£5 a session)

THURSDAY:

- Art Club - Open to all children - 3:05-4:15pm (£2 a session)
- Tennis Club - Years 3-6 - 3:05-4pm (£5 a session)

FRIDAY:

- ROCKSTEADY CLUB - Years 1-6 - 1-3:30pm

(Rocksteady Club will start on Friday 8th September. Spaces are available on a range of instruments! Book your slot here [CLICK HERE!](#))

- Movers and Groovers (Dance) Club: 3:05-4:15pm

With our school led clubs (£2 a session) we ask that this is paid upfront prior to the start of the club to reserve a space. If this is a challenge or added stress for any of our families, please do come and speak with me in confidence and we will support as and where we can.

As always, if you have any further questions or queries regarding our extra curricular offer, please do let me know. This is a key element of our school offer, which we feel will support all our children to thrive and find further avenues in which they can flourish.

<u>Date</u>	<u>Event</u>
Monday 4th September	First day of Term 1 2023-2024
Wednesday 13th September	Clubs booking link opens at 8pm
Friday 15th September	Forest School for Windmills and Vikings
Week beginning 18th September	School led clubs begin
Wednesday 20th September	Phonics workshop for parents at 2:30pm
Thursday 21st September	Phonics workshop for parents at 9am
Friday 22nd September	Forest School for Oast and Oxney
Wednesday 27th September	Bookwaggon Travelling Book Fair in School
Friday 29th September	Forest School for Windmills, Rother and Smugglers
Monday 25th September	Harvest Service in church at 9am
Wednesday 11th October	Mental Health Awareness Day in School
Friday 20th October	End of Term 1
Monday 30th October	Start of Term 2

Further WSA Events for your diaries!

Saturday 7th October 7pm	WSA Charity Dinner Dance
--------------------------	--------------------------

Phonics Workshop for Parents

At any age, reading is a crucial skill. Learning this, starts for our children with phonics teaching. To strengthen the partnership between home and the classroom, we are holding a phonics workshops for parents.

These will be held on Wednesday 20th September at 2:30 -3pm and again on Thursday 21st September at 9-9:30am.

Attending these sessions will give parents a greater insight to how children are taught to read at Wittersham and enable you to share these strategies when supporting children to read at home.



If you can join us, we would love to see you there.



Compassion

Courage

Cooperation